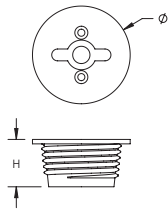


CPP Tapered Plastic Screw-In Plug for A12, A22 and A32K



- Designed for use with the A12, A22 and A32K coupler families
- Designed to keep dirt, water and concrete slurry out of the coupler during the concrete pour
- Color coded for the appropriate coupler size



Material: High Density Polyethylene (HDPE)

Part Number	Article Number	Rebar Size, Metric	Rebar Size, US	Rebar Size, Canada	Diameter \emptyset	Height H	Color
EL10CPP	153060	10 mm	#3	-	17 mm	13 mm	Yellow
EL12CPP	153070	12 mm	#4	10M	17 mm	13 mm	Red
EL14CPP	153080	14 mm	-	-	22 mm	13 mm	Green
EL16CPP	153090	16 mm	#5	15M	22 mm	13 mm	Black
EL18CPP	153100	18 mm	-	-	27 mm	13 mm	White
EL20CPP	153110	20 mm	#6	20M	27 mm	13 mm	Yellow
EL22CPP	153120	22 mm	#7	-	33 mm	16 mm	Blue
EL25CPP	153130	25 mm	#8	25M	33 mm	16 mm	Red
EL28CPP	153140	28 mm	#9	30M	37 mm	16 mm	Black
EL30CPP	153150	30 mm	-	-	37 mm	16 mm	White
EL32CPP	153160	32 mm	#10	-	42 mm	16 mm	Yellow
EL36CPP	153180	36 mm	#11	35M	46 mm	16 mm	Blue
EL40CPP	153200	40 mm	-	-	52 mm	16 mm	Green
EL50CPP	153220	50 mm	-	-	64 mm	16 mm	Black

WARNING

nVent products shall be installed and used only as indicated in nVent's product instruction sheets and training materials. Instruction sheets are available at www.erico.com and from your nVent customer service representative. Improper installation, misuse, misapplication or other failure to completely follow nVent's instructions and warnings may cause product malfunction, property damage, serious bodily injury and death and/or void your warranty.

© 2020 nVent All rights reserved

nVent, nVent CADDY, nVent ERICO, nVent ERIFLEX and nVent LENTON are owned by nVent or its global affiliates.

All other trademarks are the property of their respective owners. nVent reserves the right to change specifications without prior notice.