



Roxtec RM UG™ module with Multidiameter™

Roxtec RM modules are 60 mm (2.362") deep and easy to adapt to cable and pipes of different sizes. The UG version is used for transits in underground applications.

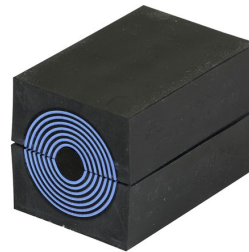
- To be used with corresponding Roxtec components to form a complete sealing solution



RM 20 UG



RM 20w40 UG



RM 40 UG



RM 80 UG WOC

Product	Number of cables/pipes	For cable/pipe Ø (mm)	External dimensions WxHxD (mm)	Weight (kg)	Art. No
RM 20 UG	1	4 - 13	20 x 20 x 60	0.03	116871
RM 20w40 UG	2	4 - 13	40 x 20 x 60	0.06	116870
RM 30 UG	1	10 - 23.5	30 x 30 x 60	0.06	116837
RM 40 UG	1	9.5 - 31	40 x 40 x 60	0.12	116865
RM 60 UG	1	24 - 52	60 x 60 x 60	0.28	116869
RM 80 UG	1	48 - 68	80 x 80 x 60	0.5	174929
RM 90 UG	1	48 - 68	90 x 90 x 60	0.6	174930
RM 80 UG WOC	1	48 - 68	80 x 80 x 60	0.34	177304
RM 90 UG WOC	1	48 - 68	90 x 90 x 60	0.46	177305
RM 120 UG WOC	1	67.5 - 96	120 x 120 x 60	0.9	177306