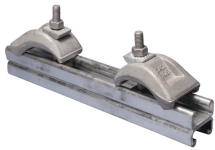
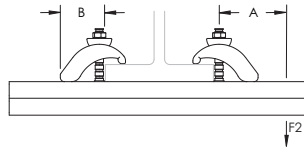
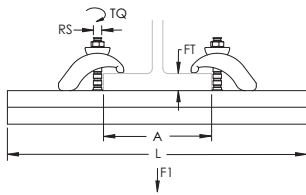


# 6000 Beam Clamp Kit – 6600CCHD (330030)



- Back-to-back welded channels provide a smooth and easy adjustable fixing over the complete length of the channel
- Pressure clamps grip the strut channel between two lips, protecting it from turning
- Safe heavy duty fixing system for cable tray, duct or pipe



Part Number	6600CCHD
Article Number	330030
Material	Steel
Finish	Hot-Dip Galvanized
Length (L)	600 mm
Strut Type	CC (41 x 41 mm)
Rod Size (RS)	M10
Flange Thickness (FT)	3 – 30 mm
B	60 mm
Torque (TQ)	30 N-m
Standard Packaging Quantity	1 pc
UPC	78285681080
EAN-13	8711893300307

Strut Type	A	Static Load 1 F1	Static Load 2 F2
CC	200 mm	4000 N	1100 N
	300 mm	3000 N	750 N
	400 mm	2250 N	550 N
	500 mm	1800 N	450 N
	600 mm	1500 N	350 N
AA	200 mm	7000 N	3250 N
	300 mm	7000 N	2250 N
	400 mm	7000 N	1750 N
	500 mm	5500 N	1400 N
	600 mm	4500 N	1150 N

## Included in this Kit

Part Number	Article Number	Description	Quantity
6120HD	330600	Heavy Duty Strut Beam Clamp, Steel, Hot-dip galvanized, 3-33 mm Flange	2
CC25H0600HD	330230	Strut Channel Type CC, Slotted, Steel, HD, 600 mm x 41 mm x 41 mm x 2.5 mm	1

### WARNING

nVent products shall be installed and used only as indicated in nVent's product instruction sheets and training materials. Instruction sheets are available at [www.erico.com](http://www.erico.com) and from your nVent customer service representative. Improper installation, misuse, misapplication or other failure to completely follow nVent's instructions and warnings may cause product malfunction, property damage, serious bodily injury and death and/or void your warranty.

© 2021 nVent All rights reserved

nVent, nVent CADDY, nVent ERICO, nVent ERIFLEX and nVent LENTON are owned by nVent or its global affiliates.

All other trademarks are the property of their respective owners. nVent reserves the right to change specifications without prior notice.

