



- Large selection of different actuators
- Versions as an NC with positive opening, NO or disconnect terminal

E4

WebCode 8082D



R. STAHL Series 8082 contact elements have an NO contact and a positive opening operation NC contact, made from silver-nickel or gold-plated. They can be easily combined with contact blocks and enable customised installations, also due to the large selection of the various actuators.

	IECEX / ATEX					
Zone	0	1	2	20	21	22
Installation in		•	•			

	NEC 500 CEC Appendix J					
	Class I		Class II		Class III	
Division	1	2	1	2	1	2
Installation in		•		•		

	CEC Section 18 NEC® 505 Class I					
Zone	0	1	2	20	21	22
Installation in		•	•			

Selection Table					
Contact material	Gold-plated				
Number of NCs	Number of NOs		Positive opening operation	Art. No.	Weight kg
1	–		Yes	273166	0.025
–	1		–	273167	0.025
Contact material	Silver-nickel				
Number of NCs	Number of NOs		Positive opening operation	Art. No.	Weight kg
1	–		Yes	240898	0.025
–	1		–	240899	0.025

The actuators of series 8602 assembly codes 001, 002, 003, 004, 005, 006, 0085, 009, 010, 012, 014, 015, 023, 703, 726, 727 and 735 can be equipped with up to 3 contact elements.

Different combinations of the contact elements are possible

Technical Data		
Variant	Silver-nickel	Gold-plated
Explosion Protection		
IECEX gas explosion protection	Ex db eb IIC T6 ... T5 Gb	Ex db eb IIC T6 ... T5 Gb
IECEX firedamp protection	Ex db eb I Mb	Ex db eb I Mb
ATEX gas explosion protection	Ex II 2 G Ex db eb IIC T6 ... T5 Gb	Ex II 2 G Ex db eb IIC T6 ... T5 Gb
ATEX firedamp protection	Ex I M2 Ex db eb I Mb	Ex I M2 Ex db eb I Mb
Certificates	ATEX (PTB), Brazil (ULB), Canada / USA (UL), China (CQST), EAC (ENDCE), IECEX (PTB)	ATEX (PTB), Brazil (ULB), Canada / USA (UL), China (CQST), EAC (ENDCE), IECEX (PTB)
Notes	Product label may vary. Series devices are labelled with ATEX, IECEX, NEC and CEC.	

Technical Data

Variant	Silver-nickel	Gold-plated
Electrical Data		
Max. rated operational voltage	550 V	550 V
Min. rated operational voltage	24 V	24 V
Rated operational current	150 mA / 10 A	10 mA / 150 mA
Rated operational current note	- Gold-plated contacts: 10 to 150 mA switching current - Silver-nickel contacts from 150 mA switching current. - For corrosive environments and offshore applications, we recommend the use of 8082 snap action switches.	- Gold-plated contacts: 10 to 150 mA switching current - Silver-nickel contacts from 150 mA switching current. - For corrosive environments and offshore applications, we recommend the use of 8082 snap action switches.
Electrical service life	10 ⁶ operating cycles	10 ⁶ operating cycles
Mechanical service life	10 ⁶ operating cycles	10 ⁶ operating cycles
Switching capacity AC-12	250 V/10 A 400 V/7.5 A 550 V/5 A	
Switching capacity AC-15	110 V/10 A 250 V/6 A 400 V/4 A	
Switching capacity DC-13	110 V/1 A	
Switching capacity DC-13 2 contact elements in series	60 V/6 A 110 V/2.5 A 250 V/1.25 A	
Ambient Conditions		
Ambient temperature	-60 °C ... +70 °C (T6) -60 °C ... +85 °C (T5)	-60 °C ... +70 °C (T6) -60 °C ... +85 °C (T5)
Ambient temperature	-76 °F ... +158 °F (T6) -76 °F ... +185 °F (T5)	-76 °F ... +158 °F (T6) -76 °F ... +185 °F (T5)
Ambient temperature NEC	-60 °C ... +75 °C (T6) -60 °C ... +90 °C (T5)	-60 °C ... +75 °C (T6) -60 °C ... +90 °C (T5)
Ambient temperature NEC	-76°F ... +167°F (T6) -76°F ... +194°F (T5)	-76°F ... +167°F (T6) -76°F ... +194°F (T5)
Operating temperature	-60 °C ... +100 °C	-60 °C ... +100 °C
Operating temperature	-76 °F ... +212 °F	-76 °F ... +212 °F
Operating temperature NEC	-60 °C ... +95 °C	-60 °C ... +95 °C
Operating temperature NEC	-76 °F ... +203 °F	-76 °F ... +203 °F
Notes	Group assembly: installation conditions influence the ambient temperature	
Mechanical Data		
IP degree of protection (IEC 60529)	IP20	IP20
Enclosure material	Polyamide	Polyamide
Silicone-free	Yes	Yes
Solid connection cross section	0.32 – 2.5 mm²	0.32 – 2.5 mm²
Connection cross-section AWG single stranded	AWG22 - AWG14	AWG22 - AWG14
Finely stranded connection cross section	0.32 – 2.5 mm²	0.32 – 2.5 mm²
Connection cross-section AWG finely stranded	AWG22 - AWG14	AWG22 - AWG14
Connection cross-section, finely stranded with core end sleeve	0.32 – 2.5 mm²	0.32 – 2.5 mm²
Connection cross-section, finely stranded with core end sleeve AWG	AWG22 - AWG14	AWG22 - AWG14
Mounting / Installation		
Tightening torque	1.2 Nm	1.2 Nm
Tightening torque lbf in	10.62 lbf in	10.62 lbf in
Connection type	Screw terminal	Screw terminal



Accessories			
Figure	Description	Art. No.	Weight kg
Pushbutton			
	Ø 39 mm Black Designation plate: Black, blank disc without text Silicone-free: Yes	223691 ▲	0.034
	Ø 39 mm Black Designation plate: Black, blank disc without text Silicone-free: No	223692 ▲	0.034
Mushroom pushbutton, black			
	Ø 39 mm Black Designation plate: Black, blank disc without text Silicone-free: Yes	244563	0.050
	Ø 39 mm Black Designation plate: Black, blank disc without text Silicone-free: No	244564	0.050
Mushroom pushbutton, red			
	Ø 39 mm Red/black Designation plate: Red, blank disc without text Silicone-free: Yes	244565	0.050
	Ø 39 mm Red/black Designation plate: Red, blank disc without text Silicone-free: No	244566	0.050
Mushroom stay-put button with key			
	Ø 39 mm Red/black Closing: MS1 Silicone-free: Yes	223695	0.075
	Ø 39 mm Red/black Closing: MS1 Silicone-free: No	223696	0.075
Key-operated switch actuator			
	Ø 39 mm Black Closing: MS1 Number of switching positions: 2 Switching function: Latching / Latching Silicone-free: No	244574	0.050
	Ø 39 mm Black Closing: MS1 Number of switching positions: 3 Switching function: Latching / Latching / Latching Silicone-free: No	244633	0.050
Mushroom stay-put button with EM-STOP key			
	Ø 39 mm Yellow/red Designation plate: With yellow backing plate Closing: MS1 Silicone-free: Yes	223693	0.075
	Ø 39 mm Yellow/red Designation plate: With yellow backing plate Closing: MS1 Silicone-free: No	223694	0.075

Accessories

Figure	Description	Art. No.	Weight kg
Mushroom stay-put button EM-STOP			
	Ø 39 mm Yellow/red Designation plate: With yellow backing plate Silicone-free: Yes	223697	0.050
	Ø 39 mm Yellow/red Designation plate: With yellow backing plate Silicone-free: No	223698	0.050
Mushroom stay-put button, black			
	Ø 39 mm Black Silicone-free: Yes	223699	0.050
	Ø 39 mm Black Silicone-free: No	223700	0.050
Mushroom pushbutton 55 mm red			
	Ø 55 mm Black/red Designation plate: Red, blank disc without text Silicone-free: Yes	244634	0.055
	Ø 55 mm Black/red Designation plate: Red, blank disc without text Silicone-free: No	244635	0.055
Mushroom stay-put button 55 mm EM-STOP			
	Ø 55 mm Yellow/red Designation plate: With yellow backing plate Silicone-free: Yes	244636	0.055
	Ø 55 mm Yellow/red Designation plate: With yellow backing plate Silicone-free: No	244637	0.055
Twin pushbutton			
	Black Silicone-free: Yes	244638	0.045
	Black Silicone-free: No	244639	0.045
Mushroom pushbutton 55 mm black			
	Ø 55 mm Black Designation plate: Black, blank disc without text Silicone-free: Yes	244642	0.055
	Ø 55 mm Black Designation plate: Black, blank disc without text Silicone-free: No	244643	0.055

Accessories			
Figure	Description	Art. No.	Weight kg
Small rotary actuator, not lockable			
	Ø 39 mm Black Designation plate: 0/OFF – I/ON Number of switching positions: 2 Lockable in: Not padlockable Switching function: Latching / Latching Silicone-free: Yes	244646	0.040
	Ø 39 mm Black Designation plate: 0/OFF – I/ON Number of switching positions: 2 Lockable in: Not padlockable Switching function: Latching / Latching Silicone-free: No	244647	0.040
	Ø 39 mm Black Designation plate: I – 0 – II Number of switching positions: 3 Lockable in: Not padlockable Switching function: Latching / Latching / Latching Silicone-free: Yes	244648	0.040
	Ø 39 mm Black Designation plate: I – 0 – II Number of switching positions: 3 Lockable in: Not padlockable Switching function: Latching / Latching / Latching Silicone-free: No	244649	0.040
Small rotary actuator, lockable			
	Ø 39 mm Black Designation plate: 0/OFF – I/ON Number of switching positions: 2 Lockable in: One pos. with one lock Switching function: Latching / Latching Silicone-free: Yes	244650	0.040
	Ø 39 mm Black Designation plate: 0/OFF – I/ON Number of switching positions: 2 Lockable in: One pos. with one lock Switching function: Latching / Latching Silicone-free: No	244651	0.040
	Ø 39 mm Black Designation plate: I – 0 – II Number of switching positions: 3 Lockable in: One pos. with one lock Switching function: Latching / Latching / Latching Silicone-free: Yes	244652	0.040
	Ø 39 mm Black Designation plate: I – 0 – II Number of switching positions: 3 Lockable in: One pos. with one lock Switching function: Latching / Latching / Latching Silicone-free: No	244653	0.040
Illuminated pushbutton (spring return) BG735			
	Diameter 39.0 mm All colours Silicone-free: Yes	244654	0.035
	Diameter 39.0 mm All colours Silicone-free: No	244655	0.035




Spare Parts

Figure	Description	Art. No.	Weight kg
Mushroom stay-put button with key			
	Ø 39 mm Red/black Closing: MS2 Silicone-free: Yes	270409	0.075
	Ø 39 mm Red/black Closing: MS2 Silicone-free: No	270412	0.075
	Ø 39 mm Red/black Closing: MS3 Silicone-free: Yes	270410	0.075
	Ø 39 mm Red/black Closing: MS3 Silicone-free: No	270413	0.075
	Ø 39 mm Red/black Closing: MS4 Silicone-free: Yes	270411	0.075
	Ø 39 mm Red/black Closing: MS4 Silicone-free: No	270414	0.075
Key-operated switch actuator			
	Ø 39 mm Black Closing: MS1 Number of switching positions: 2 Switching function: Latching / Latching Silicone-free: Yes	244573	0.050
	Ø 39 mm Black Closing: MS2 Number of switching positions: 2 Switching function: Latching / Latching Silicone-free: Yes	272935	0.060
	Ø 39 mm Black Closing: MS3 Number of switching positions: 2 Switching function: Latching / Latching Silicone-free: Yes	274089	0.050
	Ø 39 mm Black Closing: MS4 Number of switching positions: 2 Switching function: Latching / Latching Silicone-free: Yes	272936	0.060

Spare Parts

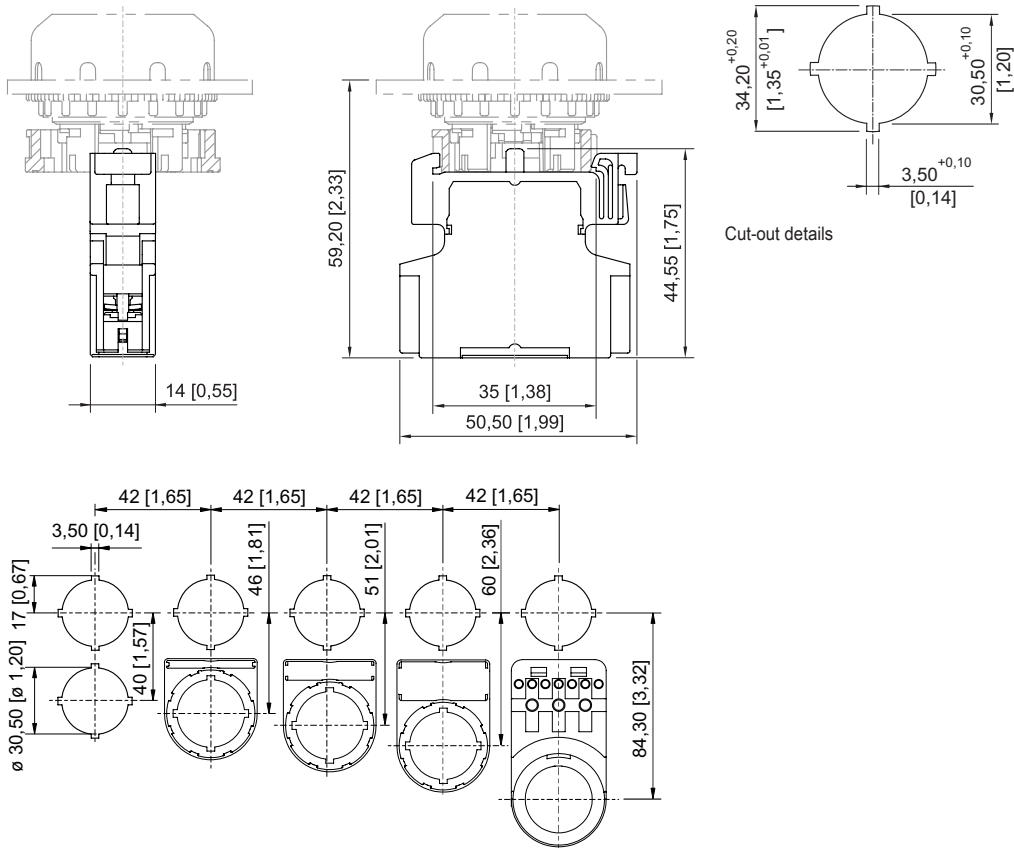
Figure	Description	Art. No.	Weight kg
Key-operated switch actuator			
	Ø 39 mm Black Closing: MS1 Number of switching positions: 3 Switching function: Latching / Latching / Latching Silicone-free: Yes	244632	0.050
	Ø 39 mm Black Closing: MS2 Number of switching positions: 3 Switching function: Latching / Latching / Latching Silicone-free: Yes	274090	0.050
	Ø 39 mm Black Closing: MS3 Number of switching positions: 3 Switching function: Latching / Latching / Latching Silicone-free: Yes	274091	0.050
	Ø 39 mm Black Closing: MS4 Number of switching positions: 3 Switching function: Latching / Latching / Latching Silicone-free: Yes	274092	0.050
	Ø 39 mm Black Closing: MS2 Number of switching positions: 2 Switching function: Latching / Latching Silicone-free: No	270418	0.050
	Ø 39 mm Black Closing: MS3 Number of switching positions: 2 Switching function: Latching / Latching Silicone-free: No	270419	0.050
	Ø 39 mm Black Closing: MS4 Number of switching positions: 2 Switching function: Latching / Latching Silicone-free: No	270420	0.050
	Ø 39 mm Black Closing: MS2 Number of switching positions: 3 Switching function: Latching / Latching / Latching Silicone-free: No	270421	0.050
	Ø 39 mm Black Closing: MS3 Number of switching positions: 3 Switching function: Latching / Latching / Latching Silicone-free: No	270422	0.050
	Ø 39 mm Black Closing: MS4 Number of switching positions: 3 Switching function: Latching / Latching / Latching Silicone-free: No	270423	0.050

Spare Parts

Figure	Description	Art. No.	Weight kg
Mushroom stay-put button with EM-STOP key			
	Ø 39 mm Yellow/red Designation plate: With yellow backing plate Closing: MS2 Silicone-free: Yes	274099	0.750
	Ø 39 mm Yellow/red Designation plate: With yellow backing plate Closing: MS2 Silicone-free: No	270415	0.075
	Ø 39 mm Yellow/red Designation plate: With yellow backing plate Closing: MS3 Silicone-free: Yes	274100	0.750
	Ø 39 mm Yellow/red Designation plate: With yellow backing plate Closing: MS3 Silicone-free: No	270416	0.075
	Ø 39 mm Yellow/red Designation plate: With yellow backing plate Closing: MS4 Silicone-free: Yes	274101	0.750
	Ø 39 mm Yellow/red Designation plate: With yellow backing plate Closing: MS4 Silicone-free: No	270417	0.075
Adaptor for front installation			
	8602/3 Front installation for indicator lamp series 8010/6 and contact element series 8082/3	227038	0.008
Holder for front installation			
	8602/3 holder for cable duct	248673	0.050

Dimensional Drawings (All Dimensions in mm [inches]) – Subject to Alterations

E4



Cut-out with / without front label