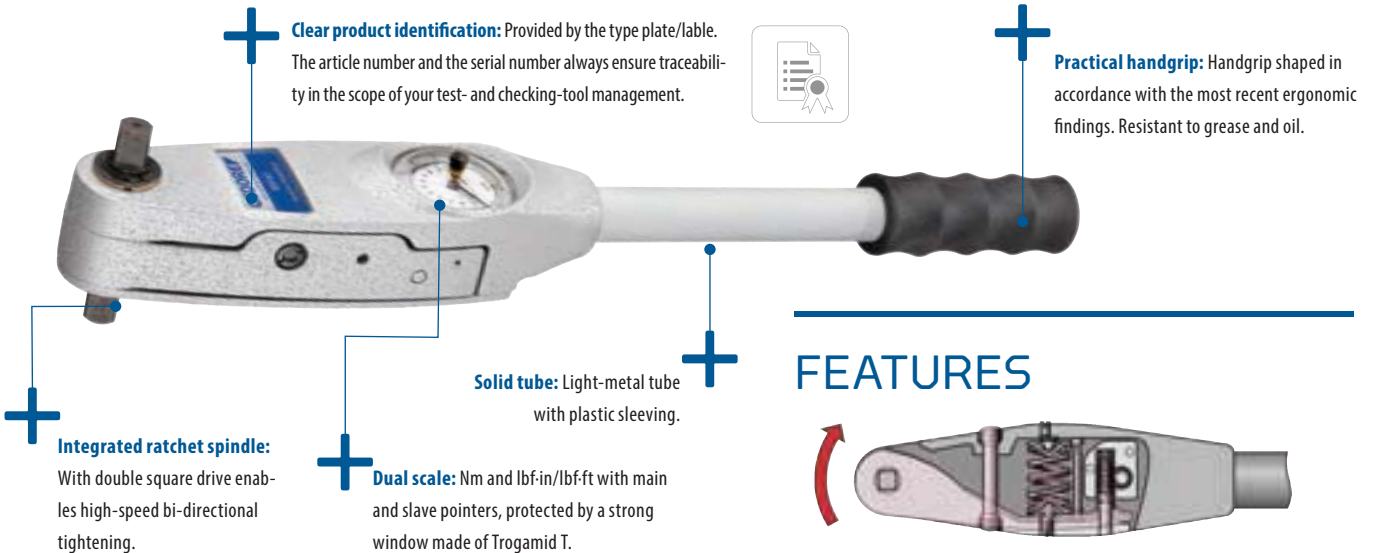


## Torque wrench Type 83

# TORQUE WRENCHES WITH SLAVE POINTER IDEAL FOR TEST, CONTROL AND MAINTENANCE WORK



## FEATURES



The working principle of the torque wrench with slave pointer type 83

## 8301 - 8302

# TORQUE WRENCH WITH SLAVE POINTER

0.8-200Nm

1/4" 3/8" 1/2"

±4%  
0000000000



### Use:

- > Controlled tightening and verification of tightening values.
- > For use in all areas of industrial manufacturing and quality control.
- > Working ranges of 0.8 to 200Nm are covered.

### Features:

- > Dial-indicating torque wrench with dual scale and multi-functional slave pointer.
- > 1/4", 3/8", 1/2" double-square drive with ball locking device for controlled bi-directional tightening.
- > Models 8301-04 to 8302-20: With integrated ratchet function.
- > For controlled screw tightening and torque measurements.
- > Working accuracy: +/- 4% tolerance of the indicated torque.
- > Double scale in Nm and lbf-in or lbf-ft double tinted clearly readable face.
- > Integrated overload protection – mechanical stop up to maximum 25% overload of the maximum value.
- > Housing made of lightweight, robust special aluminium construction – lacquered, silver-grey.
- > Black, non-slip rubber handgrips.
- > Models 8301-04 to 8301-40: EPA-conformant (Electrostatic Protected Area), for use in sensitive electrostatic applications.

### Scope of delivery:

- > Dial-measuring torque wrench type 83.
- > Test certificate according to DIN EN ISO 6789.
- > Delivered in a sturdy black plastic box (no. 8301-04 to 8302-20).



8301



8302

Code	Code	Type	■ "	■	▬▬▬▬▬▬	Nm	lbf-in	Height	↳ mm ↳	EPA	⚖
7651390	8301-04	☞	1/4	6.3	0,1Nm / 1lbf-in	0,8-4	7-35	61	244	x	0,50
7651470	8301-12	☞	1/4	6.3	0,5Nm / 2lbf-in	2,4-12	21-105	61	244	x	0,50
7651550	8301-25	☞	3/8	10.0	1Nm / 10lbf-in	5-25	44-240	69	244	x	0,50
7651630	8301-40	☞	3/8	10.0	1Nm / 10lbf-in	8-40	72-360	69	244	x	0,50
7651710	8302-08	☞	1/2	12.5	2Nm / 1lbf-ft	16-80	12-60	86	435		1.40
7651980	8302-20	☞	1/2	12.5	5Nm / 5lbf-ft	40-200	30-160	86	435		1.40