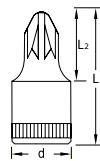


IKS 20 PZ SCREWDRIVER BIT SOCKET 1/4"

6.3
1/4"

for cross-head screws Pozi PZ

- > Square drive as per DIN 3120 - C 6.3, ISO 1174, with ball retaining groove
- > Hand-operated, knurled grip
- > Chrome-plated
- > Bit in GEDORE vanadium special steel, manganese-phosphated
- > Tip as per DIN ISO 8764-1 PZ



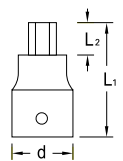
⊕ PZ	L ₁	L ₂	d	⚖	Code	No.
1	28	14.5	12	0.012	6187130	IKS 20 PZD 1
2	28	14.5	12	0.013	6187210	IKS 20 PZD 2
3	28	14.5	12	0.014	6187480	IKS 20 PZD 3
4	28	14.5	12	0.015	6187560	IKS 20 PZD 4

IN 20 SCREWDRIVER BIT SOCKET 1/4"

6.3
1/4"

for in-hex screws

- > Acc. to DIN 7422
- > Square drive as per DIN 3120 - C 6.3, ISO 1174, with ball retaining groove
- > Hand-operated, knurled grip
- > Chrome-plated
- > Bit in GEDORE vanadium special steel, manganese-phosphated
- * not standardised



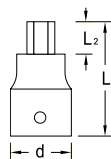
● mm	L ₁	L ₂	d	⚖	Code	No.
2	*	28	3.0	12	0.010	1812556 IN 20 2
2,5	*	28	3.5	12	0.010	1707736 IN 20 2,5
3		28	5.5	12	0.011	6176010 IN 20 3
4		28	7.0	12	0.011	6176280 IN 20 4
5		28	8.0	12	0.012	6176360 IN 20 5
6		28	8.5	12	0.013	6178490 IN 20 6
8	*	28	10.0	12	0.016	6178570 IN 20 8

IN 20 L SCREWDRIVER BIT SOCKET 1/4"

6.3
1/4"

for in-hex screws, long pattern

- > Acc. to DIN 7422
- > Square drive as per DIN 3120 - C 6.3, ISO 1174, with ball retaining groove
- > Hand-operated, knurled grip
- > Chrome-plated
- > Bit in GEDORE vanadium special steel, manganese-phosphated



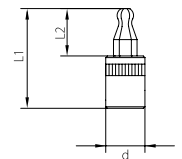
● mm	L ₁	L ₂	d	⚖	Code	No.
3	60	32	12	0.024	1933256	IN 20 L 3-60
4	60	32	12	0.025	1933264	IN 20 L 4-60
5	60	32	12	0.027	1933272	IN 20 L 5-60
6	60	32	12	0.029	1933280	IN 20 L 6-60
8	60	32	14	0.050	1933299	IN 20 L 8-60

IN 20 K SCREWDRIVER BIT SOCKET 1/4"

6.3
1/4"

with ball end, for in-hex screws

- > Square drive as per DIN 3120 - C 6.3, ISO 1174, with ball retaining groove
- > Hand-operated, knurled grip
- > Chrome-plated
- > With pressed-in pin, manganese-phosphated
- > Total swivel angle approx. 15-20°



● mm	L ₁	L ₂	d	⚖	Code	No.
4	30.5	14.5	12	0.010	2219409	IN 20 K 4
5	30.5	14.5	12	0.010	2219417	IN 20 K 5
6	30.5	14.5	12	0.013	2219468	IN 20 K 6