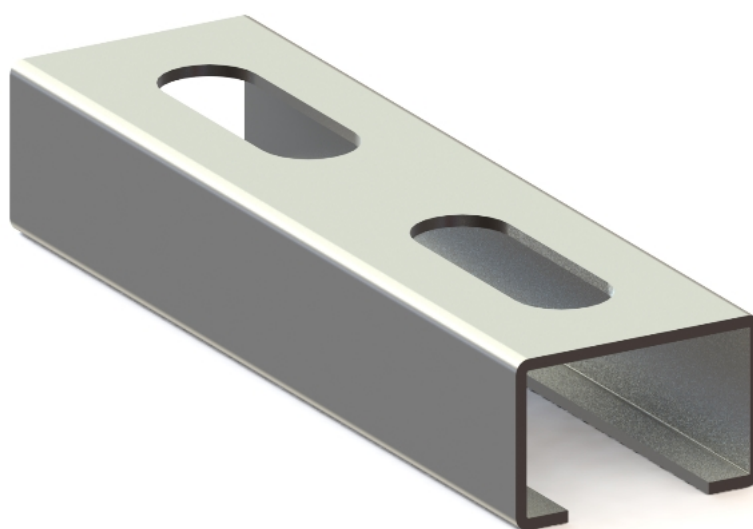


CHANNELS TYPE W1,25 (28X18X1,25 MM)


- **Anti-corrosion protection:** galvanic zinc-plating.
- **Application:** for making constructions, traverses and supporting frames of ventilation ducts. The profiles ensure high quality for a good price.

<i>Length L [mm]</i>	<i>Mass [kg]</i>	<i>Designation for the order</i>	<i>Part number</i>
2000	1,28	SZ-W1,25-2000	0728181220
3000	1,92	SZ-W1,25-3000	0728181230
4000	2,56	SZ-W1,25-4000	0728181240
6000	3,84	SZ-W1,25-6000	0728181260

CHANNELS TYPE W1,25 (28X18X1,25 MM)

