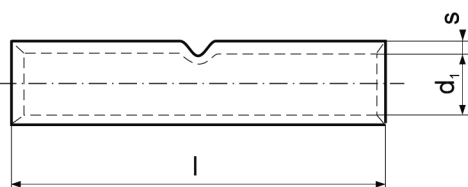


ALD Tubular connector

for single- and multi-wire Al cables



Material: aluminum
According to DIN 46267 part 2

Cross section se	rm/sm	Symbol	s [mm]	d ₁ [mm]	l [mm]	Weight [g/szt]	Unit [pcs]	Dies discriminant	Crimping tools
25	16	ALD 16 *	3,2	5,6	55	13,50	10	12	R50 + as below
35	25	ALD 25	2,6	6,8	70	14,10	10	12	
50	35	ALD 35	3	8	85	23,60	10	14	
70	50	ALD 50	3,1	9,8	85	28,70	10	16	
95	70	ALD 70	3,65	11,2	105	50,70	10	18	
120	95	ALD 95	4,4	13,2	105	70,00	10	22	EPZC300, EPZ300, GZ300, HRZ300, PRZ240, GO300, GU300, HR300, GU120, HR100-U, PR240, PR95A
150	120	ALD 120	4,15	14,7	105	66,50	10	22	PR240 + as below
185	150	ALD 150	4,35	16,3	125	95,00	1	25	
240	185	ALD 185	5,1	18,3	125	125,00	1	28	
300	240	ALD 240	5,5	21	145	182,82	1	32	EPZC300, EPZ300, GZ300, HRZ300, GO300, GU300, HR300
300	ALD 300	5,35	23,3	145	188,88	1	34		
400	ALD 400	6,25	26	210	360,00	1	38	GU625	
500	ALD 500	7,5	29	210	490,00	1	44		
625	ALD 625 *	8,5	35	210	660,00	1	52		

* outside DIN standard.

se- single-strand sector wire

rm – multi-strand round wire

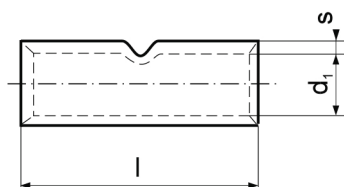
sm – multi-strand sector wire

Terminals of dimensions other than in chart on request.

Connectors with contact paste on request - indicate such. AS 8-16-P.

ALC Tubular connector

(thin-walled) for single- and multi-wire Al cables



Material: aluminum

Cross section rm/sm [mm ²]	Symbol	s [mm]	d ₁ [mm]	l [mm]	Weight [g/pce]	Unit [pcs]	Dies discriminant	Crimping tools
16	ALC 16	2	5,2	50	5,95	20	9	R50 + as below
25	ALC 25	2	6,4	58	8,15	20	10	
35	ALC 35	2,2	7,6	63	11,50	10	12	
50	ALC 50	2,4	9,2	76	17,50	10	14	
70	ALC 70	2,5	10,6	84	22,50	10	16	
95	ALC 95	2,6	12,8	96	32,30	10	18	EPZC300, EPZ300, GZ300, HRZ300, PRZ240, GO300, GU300, HR300, GU120, HR100-U, PR240, PR95A
120	ALC 120	2,7	14,3	105	40,60	10	20	EPZC300, EPZ300, GZ300, HRZ300, GO300, GU300, HR300
150	ALC 150	2,9	16,2	120	55,53	1	22	PR240
185	ALC 185	3,1	17,8	125	68,20	1	24	+ as below
240	ALC 240	4	20,2	136	109,45	1	28	HR300, HRZ300, GU300, GO300, GZ300, EPZ300

Production on request. - Connectors of dimensions other than in chart.