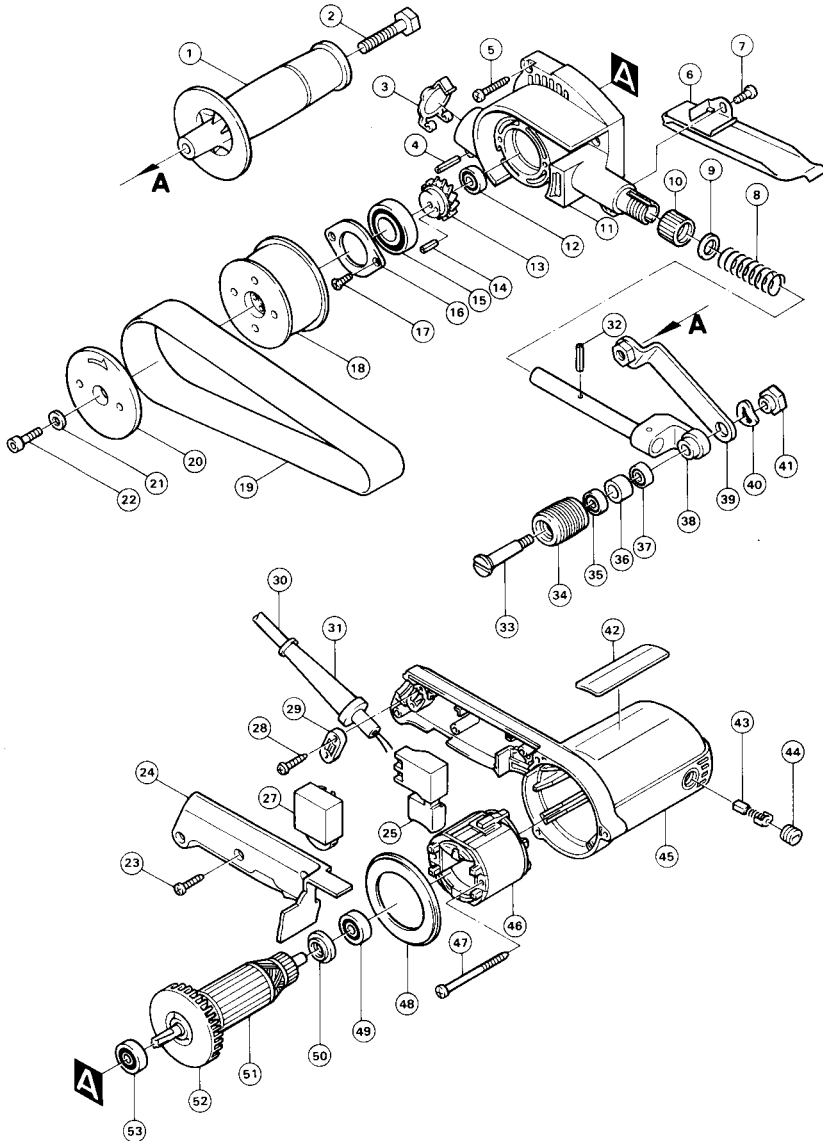


# BELT SANDER Model 9031



Note: The switch and other part configurations may differ from country to country.

ITEM NO.	NO. USED	DESCRIPTION	ITEM NO.	NO. USED	DESCRIPTION
<b>MACHINE</b>			<b>MACHINE</b>		
1	1	Grip 36	29	1	Strain Relief
2	1	Hex. Bolt M8x40	30	1	Cord
3	1	Cap 30	31	1	Cord Guard
4	1	Spring Pin 4-20	32	1	Spring Pin 4-20
5	3	Tapping Screw 4x25	33	1	Top Pulley Shaft
6	1	Flat Shoe	34	1	Pulley 30-25
7	1	Tapping Screw Bind CT 5x12	35	1	Ball Bearing 688DDW
8	1	Compression Spring 13	36	1	Sleeve 12
9	1	Flat Washer 12	37	1	Ball Bearing 688DDW
10	1	Wing Nut M16	38	1	Angle Stay Complete
11	1	Gear Housing Complete	39	1	Arm Complete
12	1	Ball Bearing 607LB	40	2	Wave Washer 12
13	1	Helical Gear 35	41	1	Hex. Nut M6-17
14	1	Spring Pin 3.5-12	42	1	Name Plate
15	1	Ball Bearing 6904DDW	43	2	Carbon Brush
16	1	Bearing Retainer 44	44	2	Brush Holder Cap
17	2	Tapping Screw CT 4x12	45	1	Motor Housing Complete
18	1	Pulley 33-64	46	1	FIELD ASSEMBLY
19	1	Abrasive Belt 30x533 AA100	47	2	Tapping Screw Bind BT 4x60
20	1	Pulley Liner	48	1	Baffle Plate
21	1	Flat Washer 5	49	1	Ball Bearing 627LB
22	1	Hex. Socket Head Bolt M5x20	50	1	Insulation Washer
23	3	Tapping Screw 4x18	51	1	ARMATURE ASSEMBLY
24	1	Handle Cover			(With Item 49, 50, 52 & 53)
25	1	Switch	52	1	Fan 60
27	1	Controller	53	1	Ball Bearing 608DDW
28	2	Tapping Screw 4x18			

Note: The switch and other part specifications may differ from country to country.