

Balancers

Balancers cancel the weight of the tool or instrument used and make the work less tiring, especially the one in series, which involves repetitive use of the same tool.

Useful in assembly, ideal for work stations.



Common features of the 2 models :

- die-cast aluminium case
- 3 anchorage points
- easy length adjustment by the position of the stop ball.

Each model is available in 2 versions :

- traditional model : stainless steel support cable
- new model : textile cable's support cable in polyethylenic HT fibre.

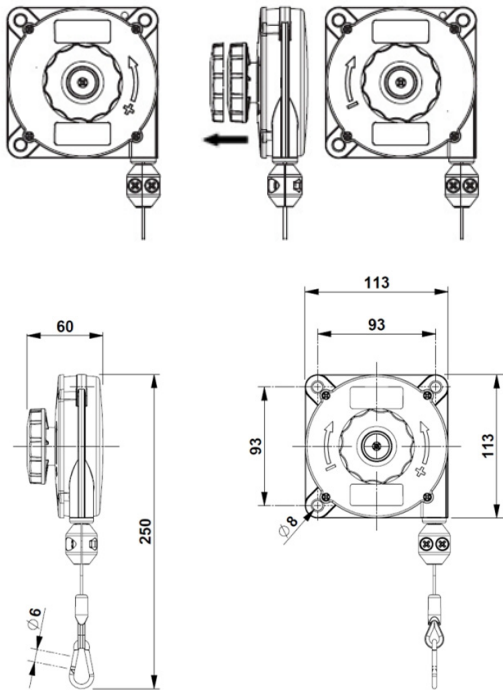
It avoids the risk of damage to the components near the work area that may accidentally touch the cable.

| Model | Length | Load | Support cable | Weight | Code |
|-------|---|------------------|-----------------|---------|-------------|
| EQ2 |  | From 0,4 to 1 kg | Polyethylenic | 0,63 kg | EQ20 |
| | | | Stainless steel | | EQ30 |
| | | From 1 to 2 kg | Polyethylenic | 0,67 kg | EQ21 |
| | | | Stainless steel | | EQ31 |
| | | From 2 to 3 kg | Polyethylenic | 0,79 kg | EQ22 |
| | | | Stainless steel | | EQ32 |
| EQ3 |  | From 2 to 4 kg | Polyethylenic | 2,85 kg | EQ23 |
| | | | Stainless steel | | EQ33 |
| | | From 4 to 6 kg | Polyethylenic | 3 kg | EQ24 |
| | | | Stainless steel | | EQ34 |
| | | From 6 to 8 kg | Polyethylenic | 3,1 kg | EQ25 |
| | | | Stainless steel | | EQ35 |
| | | From 8 to 10 kg | Polyethylenic | 3,2 kg | EQ26 |
| | | | Stainless steel | | EQ36 |
| | | From 10 to 14 kg | Polyethylenic | 3,5 kg | EQ27 |
| | | | Stainless steel | | EQ37 |

EQ2

Length 1600 mm

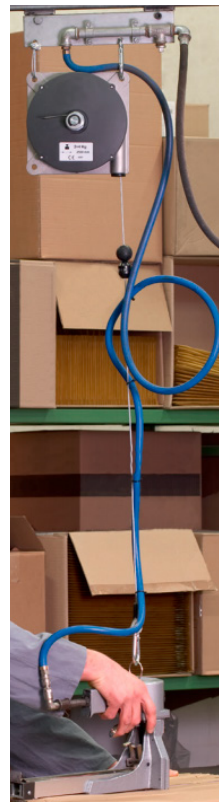
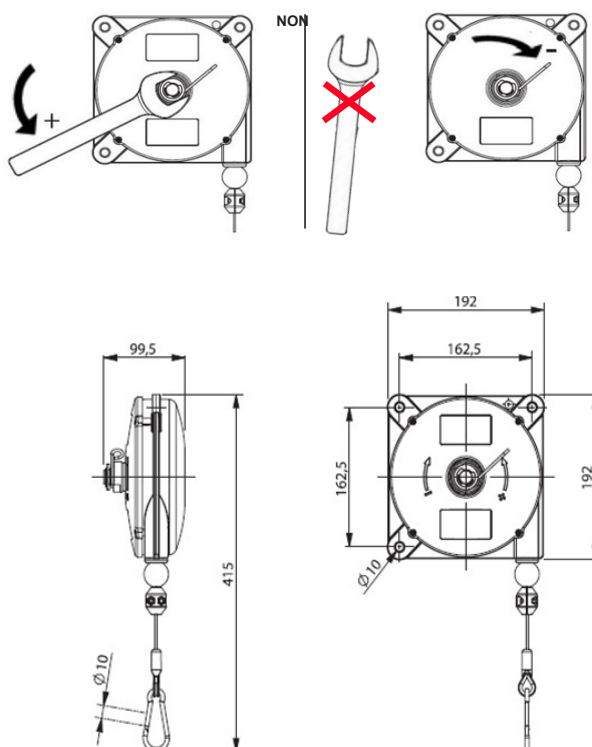
Adjustment of the pulling force by secure knob :



EQ3

Length 2500 mm

Adjustment of the pulling force with a key (not supplied) :



Spiral hose for balancers

This spiral hose allows to supply compressed air for the tool.

Hose 8x10 mm (PA12).

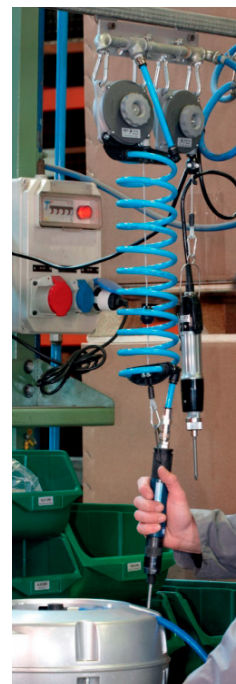
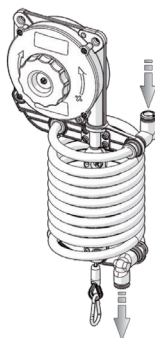
Maximum pressure : 10 bars.

Working temperature : -20°C/+80°C.

The spiral hose is equipped with a quick connector at each end.

He is supplied with an additional meter of hose for connection to the compressed air network and to the tool. It can only be applied on balancers EQ2.

Code EQ982



ROTOLIFT : spring lifting device

The ROTOLIFT is an automatic cable reel equipped with stopping device, and with a stainless steel support cable Ø 6mm.

It allows to suspend objects (up to 18 kg) and to put them within reach to the operating area : in the desired position, the stopping device system removes the spring tension and the object stays in place.

By releasing the stopping device, the object may be raised again above the operating area after use.

Example of use : hanging a gas suction pipe exhaust over the work area when it is not used.

Length : 4 meters + 3 meters outside the automatic cable reel Aluminium case.

3 models according to the load :

| Load | Length of the cable | Code |
|--------------------|---------------------|---------------|
| From 5,5 to 8,5 kg | 4+3 m | EQ6626 |
| From 9 to 12 kg | | EQ6627 |
| From 11 to 18 kg | | EQ6628 |



The capacity of the ROTOLIFT is set at the factory and is not therefore adjustable by the user.

